



**SUPERBOND®**  
FUNCTION • QUALITY • DESIGN



*Diamond Edition*



*SUPERBOND is an Indian manufacturing company specializing in Aluminium Composite Panels, located in Talasari, Palghar district of Maharashtra. We offer a diverse range of high-quality ACPs available across India.*

*Our unique range of ACP is developed with the usage of German fitted technology, We have 2 production lines which has a capacity of more then 3 million Sq.ft. The production facility is equipped with superior grades of safety measures with best Quality check process. The inhouse testing facility at the production unit is equipped with updated technology for best quality of material to be produced. Our facility has various grades & shades of ACP designs with around 120+ shades of ACP which also facilitates the client for customization of shade according to their brand guidelines.*

*SUPERBOND ACP has been ceaseless with the quality that never fails to startle. Superbond has manifested its brand by consistent ability to provide excellent results & networking throughout India having stock point & executive, which serves the client with Boosted & best service.*

## STANDARD PANEL DIMENSIONS

Thickness: 3mm, 4mm, and 6mm as per requirement. Special thickness & length available on request.  
 Standard size 1220mm x 2440mm, 1220mm x 3050mm, 1220mm x 3660mm  
 Special width: 1550mm & 915mm (as per requirement)

Product Tolerance	Width	Length	Thickness		Squareness	Bow
			Coil	Panel	Maximum 5.0mm	Maximum 0.5% of width and / or length
	+ 2.00 mm	+ 4.00 mm	$\pm 0.03 \sim \pm 0.10$ (Depending on coil)	+ 0.2 mm		

## PRODUCT CHART

Grades	Panel Thickness	Top Coil	LDPE Core Thickness	Bottom Coil	Top Coil Coating Thickness	Bottom Coil Coating Thickness	Use / Warranty * Clause Applicable
Superbond Fireguard FR B1, B2 & A2 Grade	4.00 mm	0.50 mm	3.00 mm Mineral Core	0.50 mm	$26\mu + 2$	$8\mu + 2$	Exterior/ 12 years
SB Gold 1	4.00 mm	0.50 mm	3.00 mm	0.50 mm	$26\mu + 2$	$8\mu + 2$	Exterior/ 12 years
SB Gold 2	4.00 mm	0.25 mm	3.50 mm	0.25 mm	$26\mu + 2$	$8\mu + 2$	Exterior/ 10 years
SB Gold 3	3.00 mm	0.25 mm	2.50 mm	0.25 mm	$26\mu + 2$	$8\mu + 2$	Exterior/ 10 years
SB BOND Series	3.00 mm	0.20 mm	2.60 mm	0.20 mm	$16\mu + 2$	$8\mu + 2$	Interior/ 05 years
Excel	3.00 mm	0.18 mm	2.70 mm	0.18 mm	$16\mu + 2$	$8\mu + 2$	Interior/ 05 years

## PANEL COMPOSITION

The top and the bottom layers of ACP are of coated aluminium coils and the core sandwiched between them is polyethylene.

- ★ Protection Film with Company logo
- ★ PVDF/Polyester Resin Based Coating
- ★ Primer Coating (used in case of PVDF Only)
- ★ Chromate Treated Aluminium Coil
- ★ Adhesive Film
- ★ Polyethylene Core (LDPE)
- ★ Service Coating (Anti-corrosive)
- ★ Chromate Treated Aluminium Coil

## ALUMINIUM COIL USED ARE OF ALLOY 3003-H16 AND 1100 ALLOY H16 (5052-H14 in case of demand)

## Quality Design

### A Step Up in Design & Durability

SUPERBOND offers inspiration on a grand scale. With a brand new collection of Metallic, Solid, Sand, Corrosive Metal, Fire Resistant, Glossy, Stone, Marble, Mirror, Sparkle, Skin and Wood panels SUPERBOND assures that the toughness of its product stays uncompromised.

### National Reach & Unrivalled Service

The high-tech plant at Palghar, Maharashtra has a natural edge over the competition by being closest and fastest to market. Hundreds of satisfied customers validate the distinguishable experience of choosing SUPERBOND- unmatched services!

### BUSINESS EXPERTISE

After years of hard work and persistence, SUPER BOND has established itself as a trustworthy and a sound player in the industry. The company produces impeccable quality panels in a world class manufacturing unit that is operated and supervised by the finest personnel in the industry.

SUPERBOND can furnish composite panels upto 1550mm width. The company also prides itself in providing customization on almost all specifications of composite panels. This success is a result of diligence and expertise of the management and the production team.

With clarity in vision and resolute mission, SUPERBOND is set to lead the industry standards.

### PVDF GOLD SERIES

- ◆ PVDF coating
- ◆ Coating thickness 25 to 28 micron
- ◆ Custom Colors
- ◆ Corrosion resistance
- ◆ Durable and Beautiful
- ◆ Unbreakable
- ◆ Machinable
- ◆ Environment friendly
- ◆ Low maintenance & water proof
- ◆ Excellent sound & thermal insulation
- ◆ Easy to install
- ◆ Resistant to abrasion
- ◆ Convex & Concave bending properties
- ◆ Stain resistant
- ◆ Washable
- ◆ Uniform colour

### Note: Custom Colors & Grades Can be Produced

(To minimize potential color differences, it's important to install all panels in the same direction, as indicated by the arrows on the protective film. Since different batches of products may exhibit color variations, we recommend placing a single order for each project to ensure color consistency. Remove protective film within 15 days of installation.)



ERODE SERIES

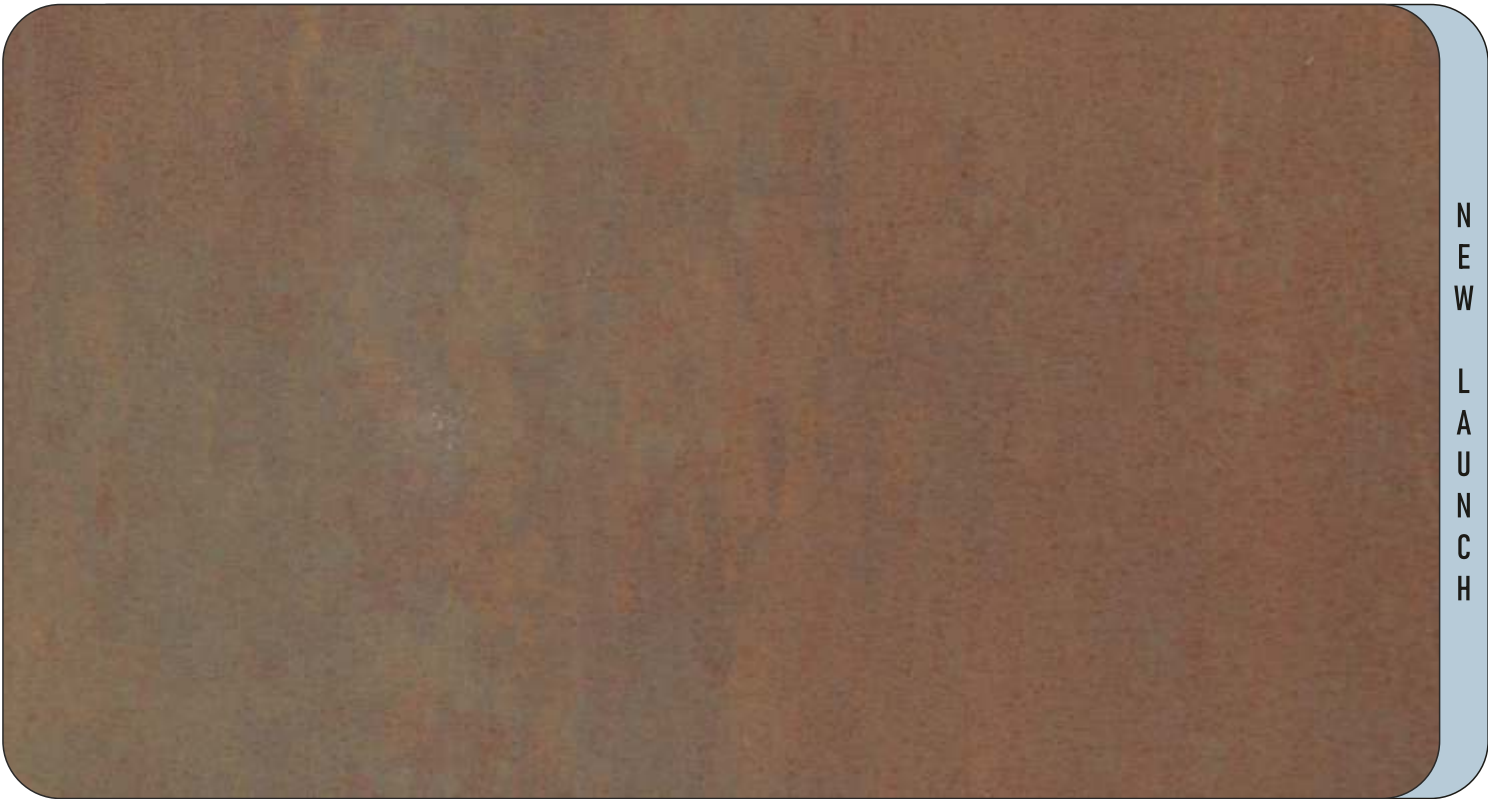


**SUPERBOND**  
FUNCTION • QUALITY • DESIGN



N  
E  
W  
  
L  
A  
U  
N  
C  
H

 SB 2001 ERODIVE METAL



N  
E  
W  
  
L  
A  
U  
N  
C  
H

 SB 2002 VINTAGE CORROSIVE METAL

FULL VIEW IMAGES



APP



CHROME



EXCEL



0.25mm



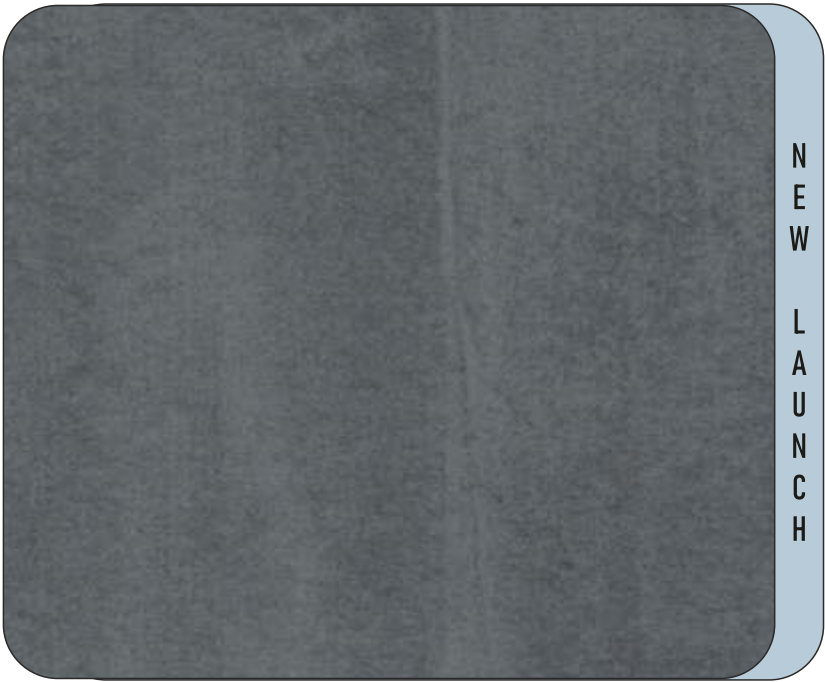
0.5mm





N  
E  
W  
  
L  
A  
U  
N  
C  
H

 SB 2003 ANILE GREEN



N  
E  
W  
  
L  
A  
U  
N  
C  
H

 SB 2004 RUSTIC TIMBER



N  
E  
W  
  
L  
A  
U  
N  
C  
H

 SB 2005 EXQUISITE TITANIUM

FULL VIEW IMAGES



APP



CHROME



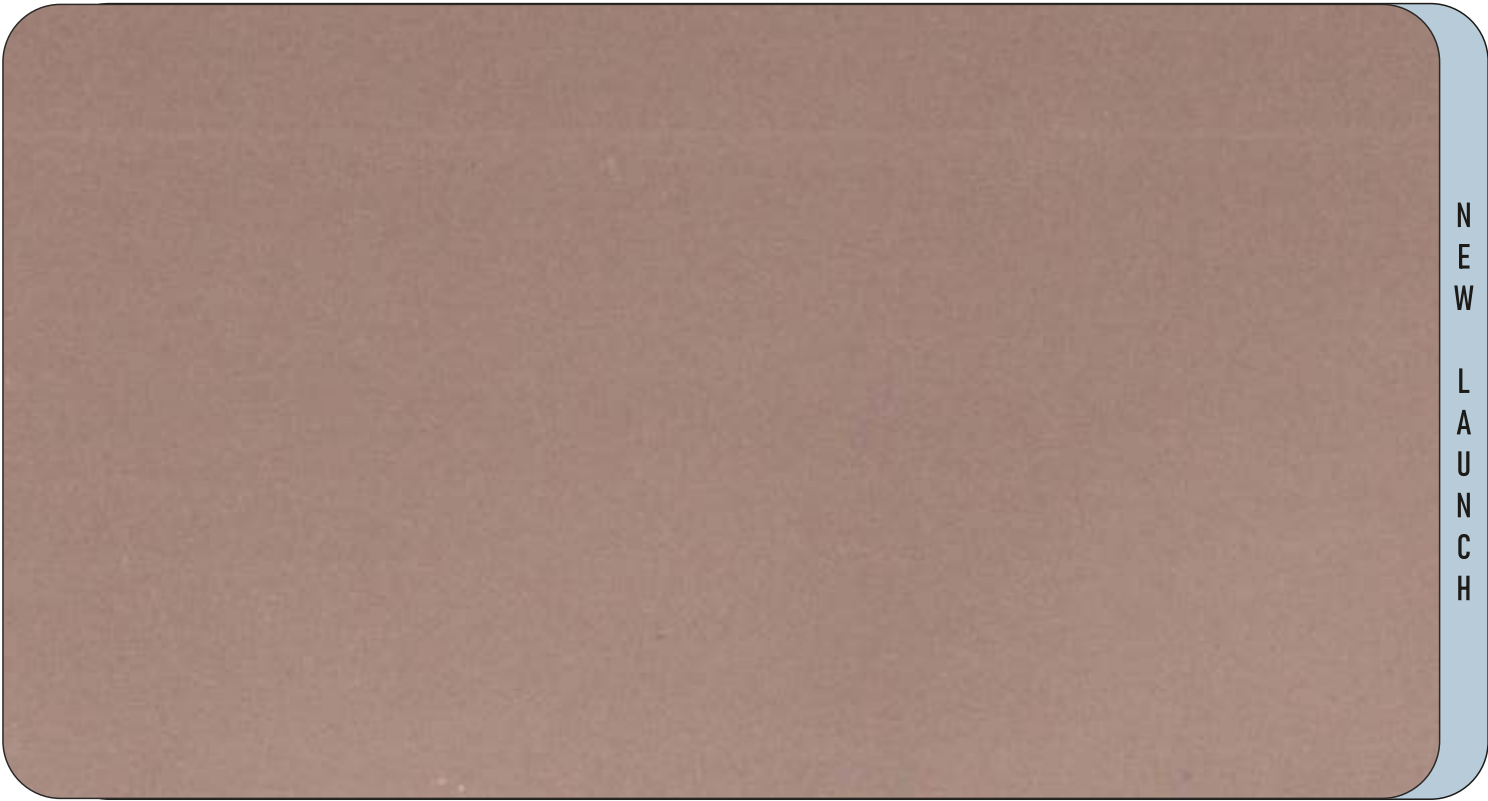
EXCEL



0.25mm



0.5mm



N  
E  
W  
  
L  
A  
U  
N  
C  
H

 SB 3001 FIERY COPPER



N  
E  
W  
  
L  
A  
U  
N  
C  
H

 SB 3002 OBSOLETE COPPER

FULL VIEW IMAGES



APP



CHROME



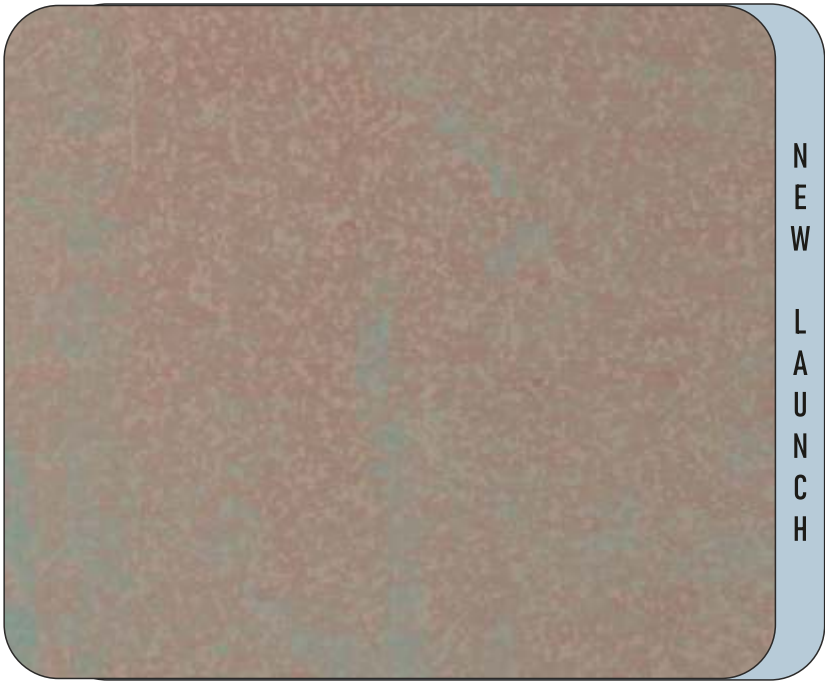
EXCEL



0.25mm

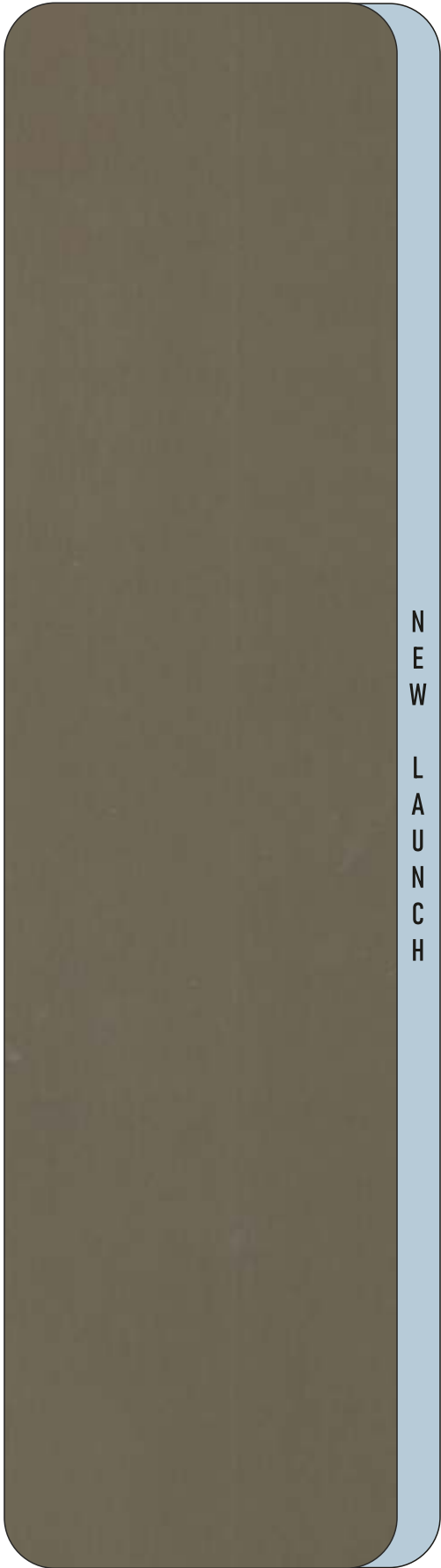


0.5mm



N  
E  
W  
  
L  
A  
U  
N  
C  
H

 SB 3003 PROFUSE COPPER RUST



N  
E  
W  
  
L  
A  
U  
N  
C  
H



N  
E  
W  
  
L  
A  
U  
N  
C  
H

 SB 3004 LUSTRE TITANIUM

 SB 3005 LUSTRE BRONZE

FULL VIEW IMAGES



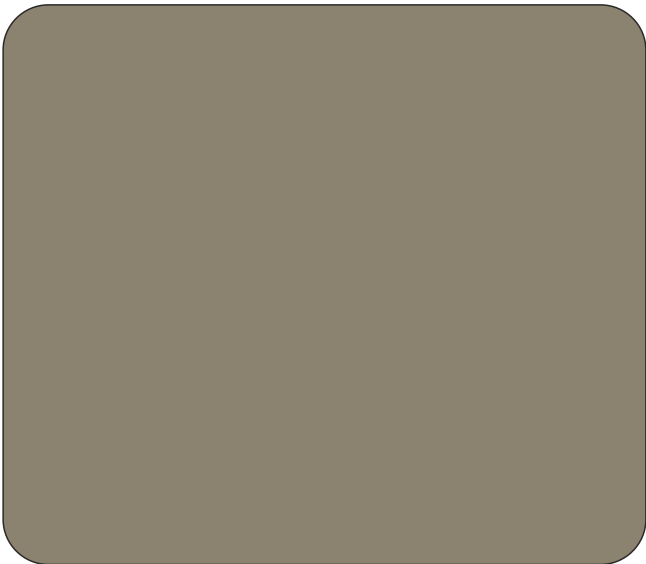




 SB 9001 BRICK



 SB 9002 CAPPUCINO



 SB 9003 PISTACHIO

FULL VIEW IMAGES



APP



CHROME



EXCEL



0.25mm



0.5mm



SB 103 BLACK GREY LOUVERS



SB 104 BLACK BROWN LOUVERS

FULL VIEW IMAGES



APP



CHROME



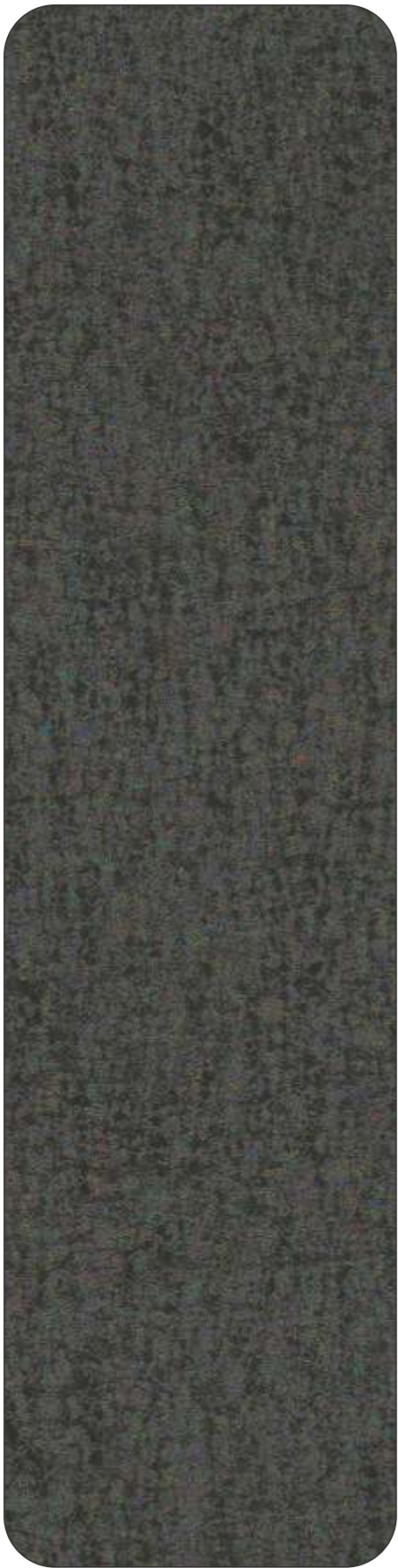
EXCEL



0.25mm



0.5mm



 SBA 7001 PLUTO

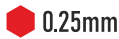


 SBA 7002 VENUS



 SBA 7003 EARTH

FULL VIEW IMAGES





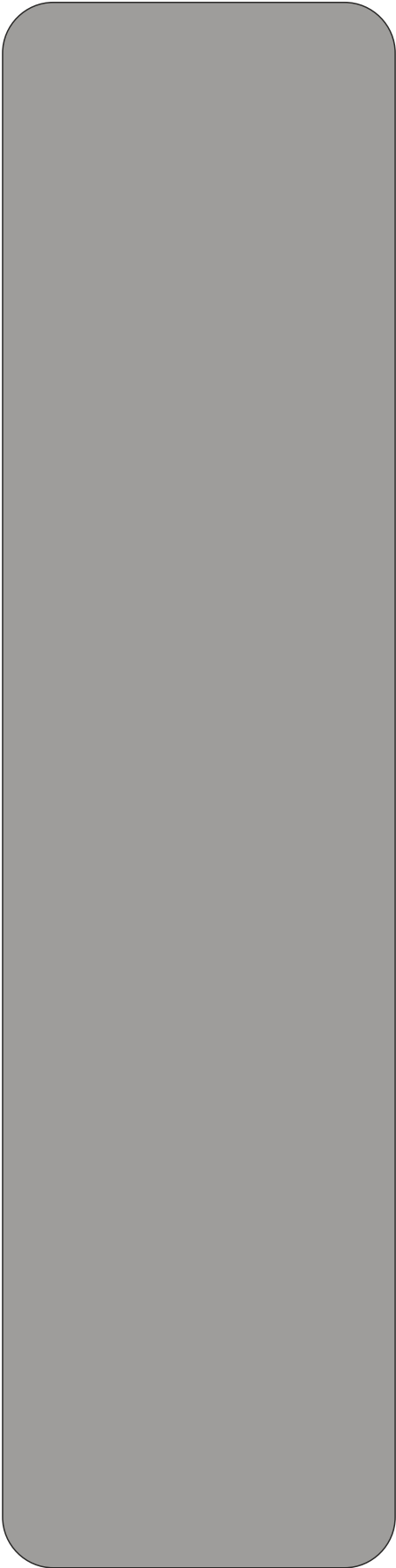
ASTRONOMY SERIES



 SBA 7004 SATURN

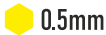
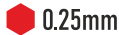


 SBA 7005 MERCURY



 SBA 7006 MARS

FULL VIEW IMAGES

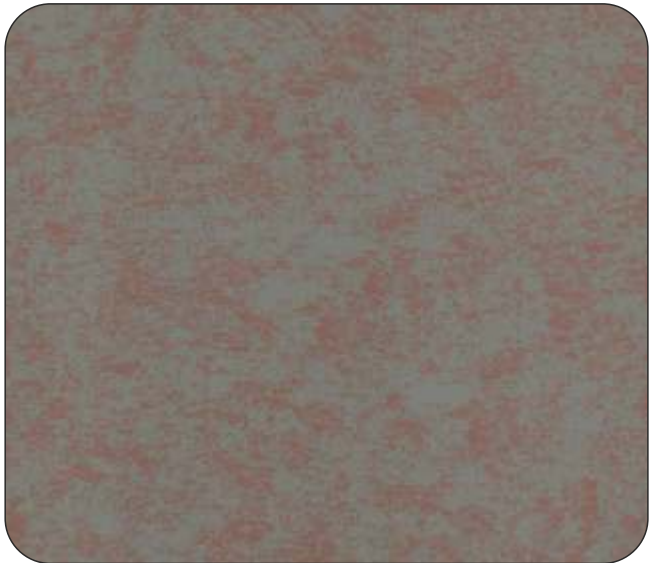




 CMT 6001 METAFRAZZO TEXTURE



 CMT 6002 CORTERN BROWN



 CMT 6003 ABSTRACT METAL

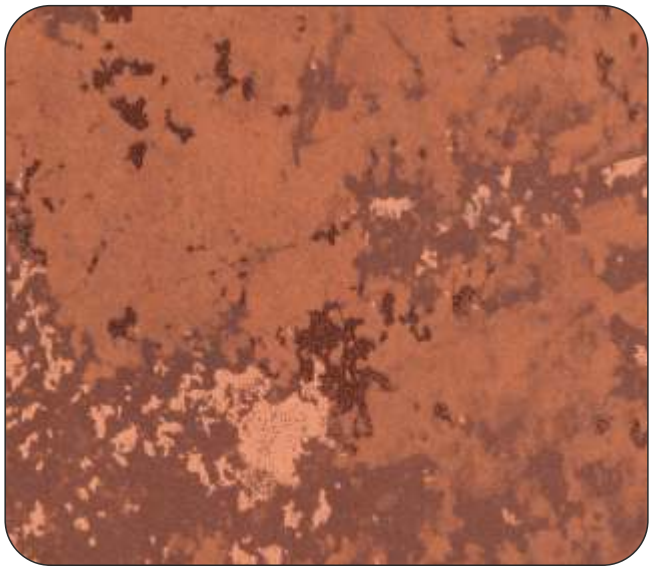


 CMT 6004 LUSTROUS GREY

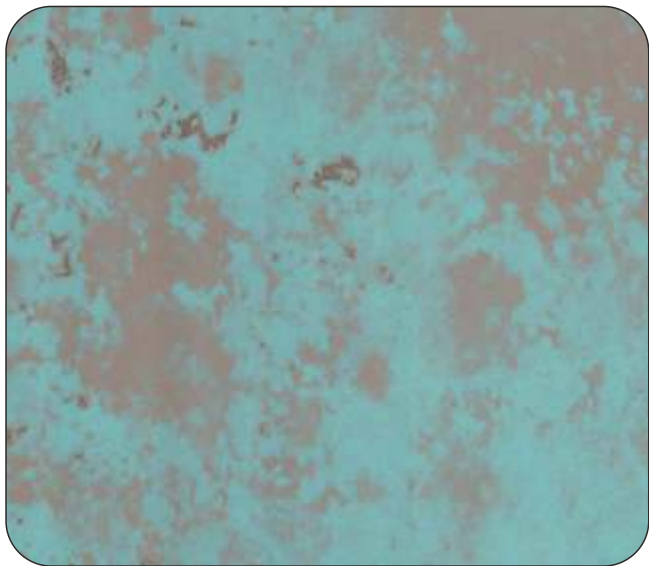
FULL VIEW IMAGES



CMT SERIES



 CMT 6007 ARCADIAN OCHRE



 CMT 6008 SAPROPHYTE RUST

FULL VIEW IMAGES



 APP    CHROME    EXCEL    0.25mm    0.5mm





STONE SERIES



STC 9050 TWILIGHT BLACK



STC 9067 FERRARI RED



STC 9092 RUSSIAN STONE

FULL VIEW IMAGES



APP



CHROME



EXCEL



0.25mm



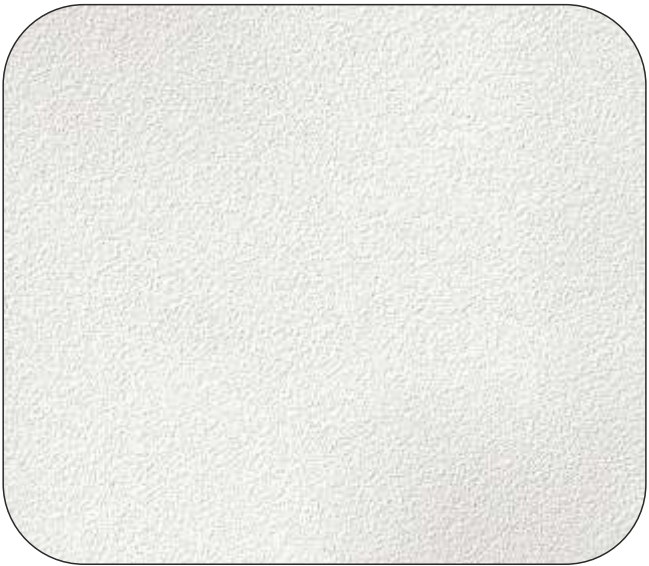
0.5mm



SAND SERIES



 SD 5001 GREY SAND STONE



 SD 5002 WHITE BEACH SAND



 SD 5003 ZURICH BEIGE SAND



 SD 5004 MAGENTA SAND STONE



 SD 5005 VIRIDIAN GREEN SAND

FULL VIEW IMAGES



APP



CHROME



EXCEL



0.25mm

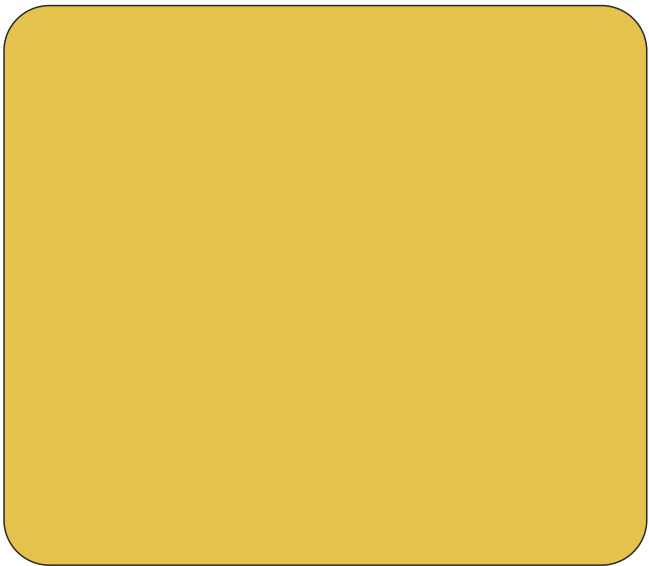


0.5mm

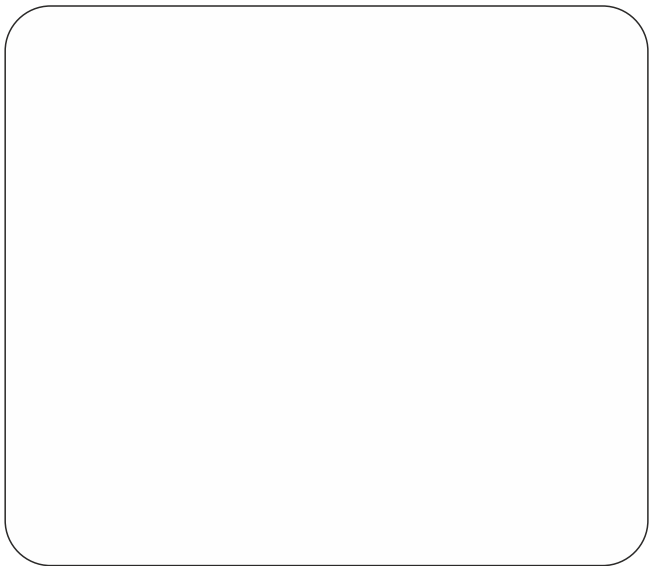
SKIN SERIES



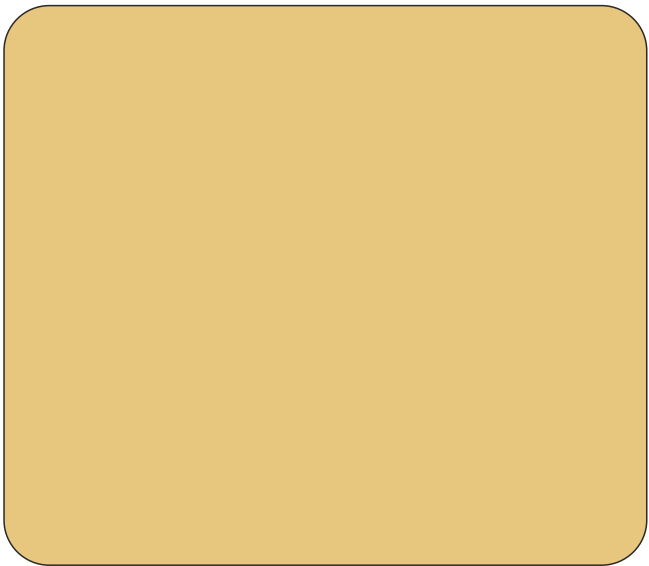
SK 4001 GREY SKIN FEELING



SK 4002 JAISALMER SUNDAY SKIN



SK 4003 MOON SKIN FEELING



SK 4004 BEIGE SKIN

FULL VIEW IMAGES





TIMBER SERIES



 SB 902 ROSE WOOD



 SB 905 BRAZILIAN HULK



 SB 910 AMERICAN WALNUT

FULL VIEW IMAGES



APP



CHROME



EXCEL



0.25mm



0.5mm

TIMBER SERIES



 SB 912 NATURAL WALNUT



 SB 913 CREME WALNUT



 SB 915 CANADIAN WALNUT

FULL VIEW IMAGES



APP



CHROME



EXCEL



0.25mm



0.5mm

TIMBER SERIES



 SB 920 TIMBER WOOD BURMA



COMING  
SOON

SB 926 BURISH BURMA



COMING  
SOON

SB 927 MEEK TIMBER

FULL VIEW IMAGES



APP



CHROME



EXCEL



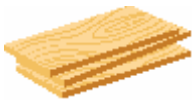
0.25mm



0.5mm



TIMBER TEXTURE SERIES



 SB 005 NATURAL TEAK TX

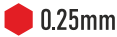


 SB 008 BURMESE TEAK TX

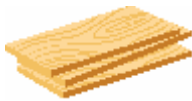


 SB 621 AFRICAN EBONY TX

FULL VIEW IMAGES



TIMBER TEXTURE SERIES



 SB 625 MAHOGANY PREMIUM TX



 SB 921 CONIFER TEAK TX



 SB 922 CHESTER OAK TX

FULL VIEW IMAGES



APP



CHROME



EXCEL

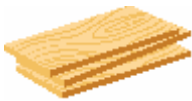


0.25mm



0.5mm

TIMBER TEXTURE SERIES



 SB 923 MACASAR WOOD TX



SB 924 STILTED WOOD TX



SB 925 TIMID BURMA TX

FULL VIEW IMAGES



APP



CHROME



EXCEL



0.25mm



0.5mm



MARBLE SERIES



 SB 801 TRAVERTINE CREME



 SB 804 EMPEROR DARK



 SB 825 WILLIAMS GREY

FULL VIEW IMAGES



APP



CHROME



EXCEL

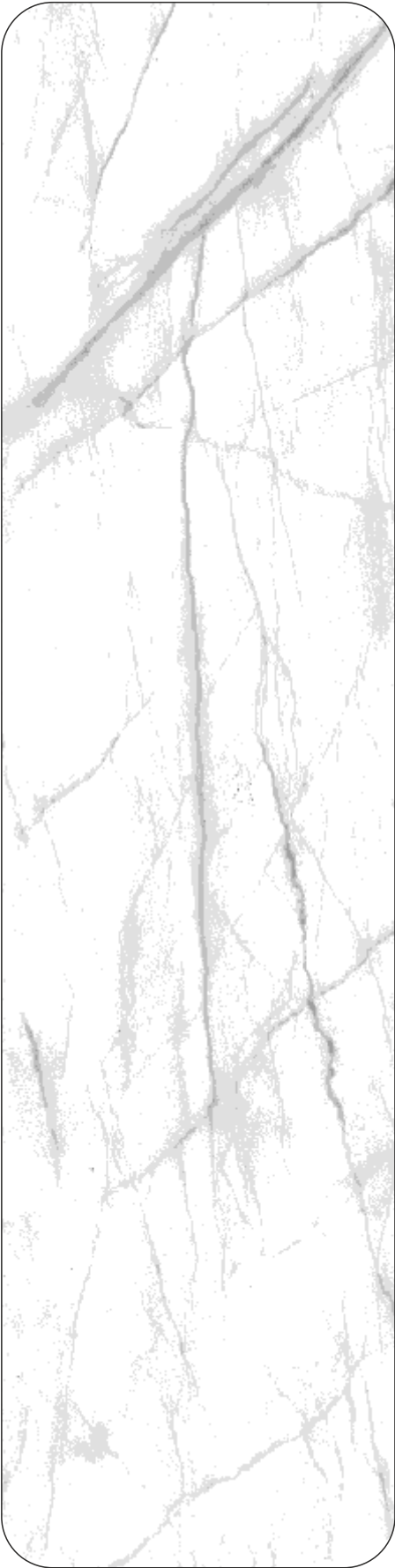


0.25mm

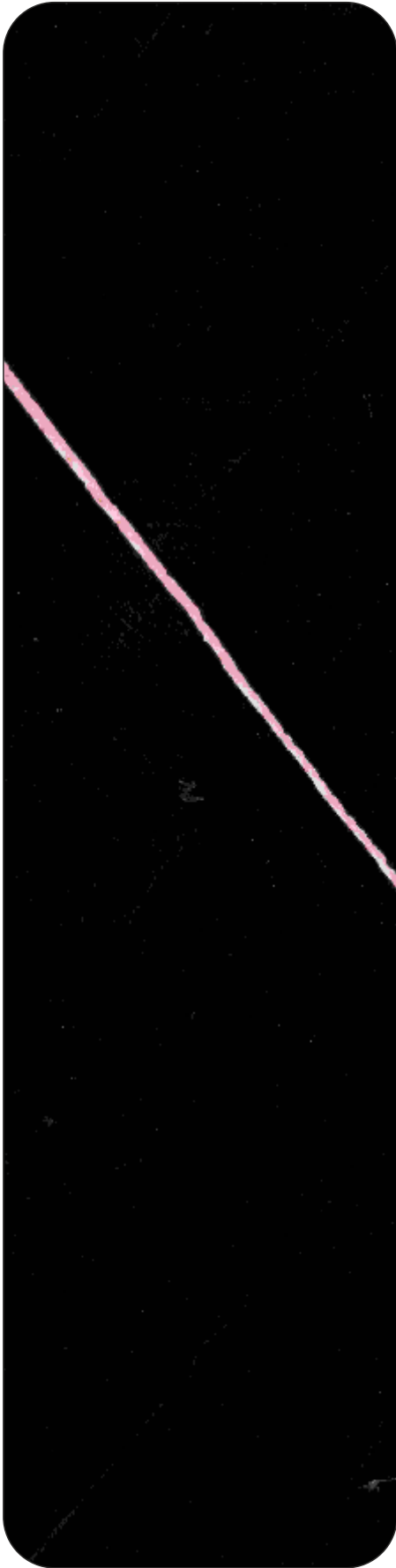


0.5mm

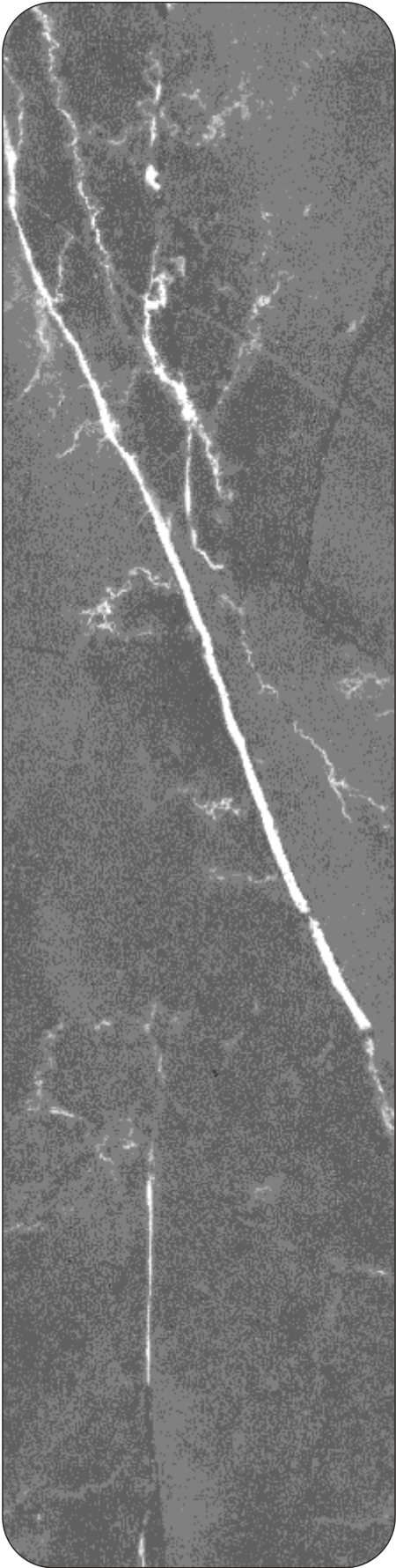
MARBLE SERIES



SB 826 NAXIAN WHITE



SB 828 BLACK MARQUINA



SB 829 MARINACE

FULL VIEW IMAGES



APP



CHROME



EXCEL



0.25mm



0.5mm

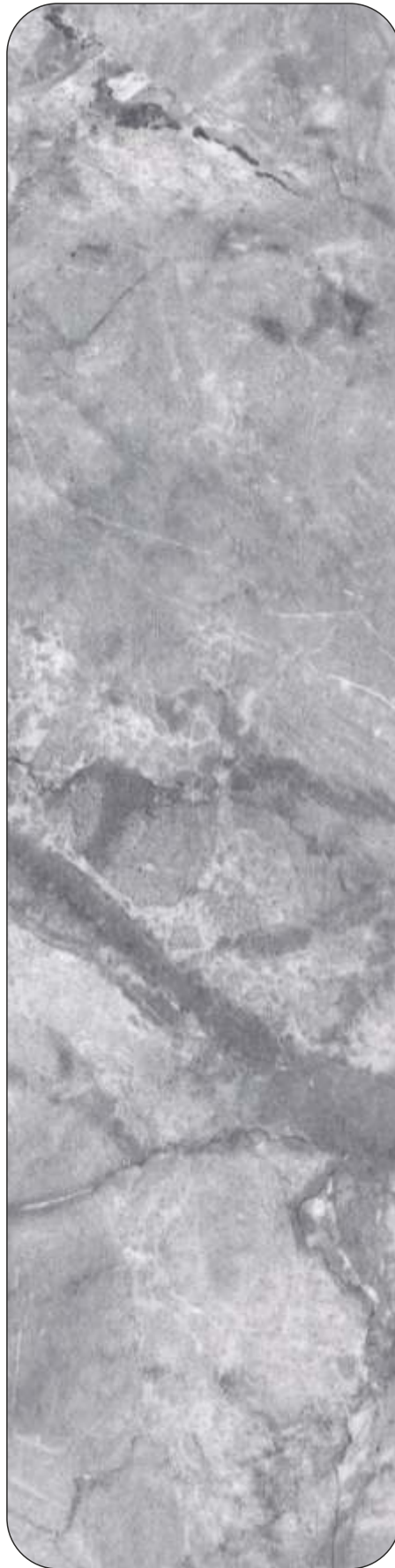
## MARBLE SERIES



**SUPERBOND**  
FUNCTION • QUALITY • DESIGN



 **SB 8001 MARMORIS STAIN**



 **SB 8002 GRESIO AGATE**



**COMING  
SOON**

 **SB 8003 AMBROSE STONE**

FULL VIEW IMAGES



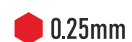
APP



CHROME



EXCEL



0.25mm



0.5mm



DISTINCT SERIES



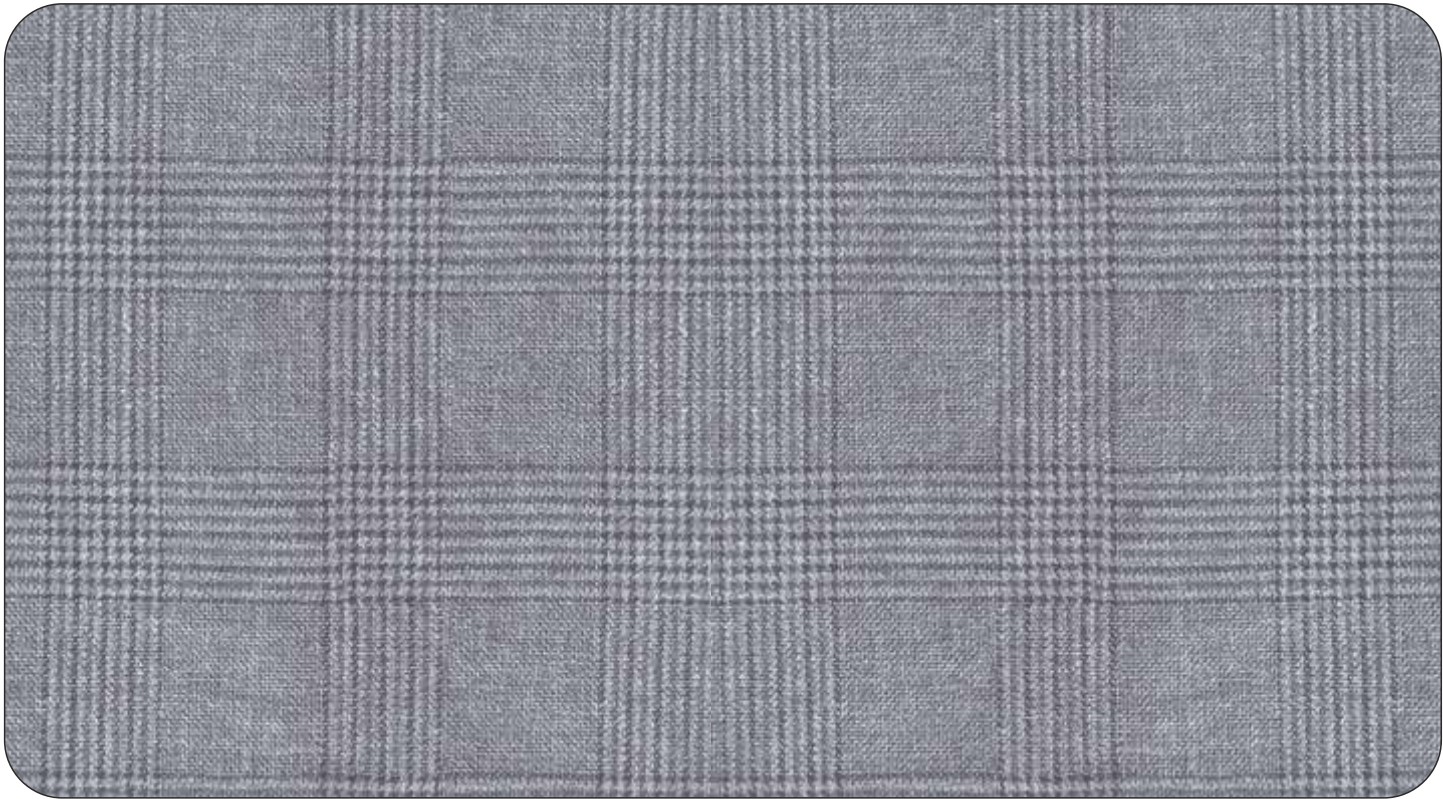
 SB 951 WHITE SPARKLING



 SB 551 STAINLESS STEEL



 SB 411 SILVER BRUSH



 SB 101 RICH WOOL CHECKS

FULL VIEW IMAGES



APP



CHROME



EXCEL

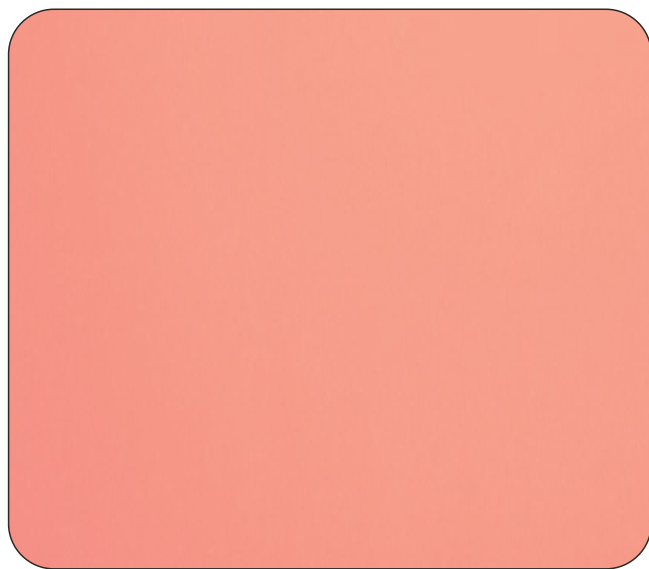


0.25mm



0.5mm

# MIRROR SERIES



SB 351 ROSE GOLD MIRROR



SB 751 SILVER MIRROR



SB 851 GOLD MIRROR

FULL VIEW IMAGES



APP



CHROME



EXCEL



0.25mm



0.5mm

## Zinc Composite Panel (ZCP) – A Detailed Overview

### What is a Zinc Composite Panel (ZCP)?

A **Zinc Composite Panel (ZCP)** is a modern architectural material consisting of a **zinc outer layer bonded to a core material**, typically made of **polyethylene (PE) / fire-retardant (FR) core** / non combustible these panels offer **durability, aesthetics, weather resistance, and flexibility**, making them popular in **facades, cladding, ceiling and interior applications**.

#### 1. Structure of Zinc Composite Panel

A ZCP generally consists of three layers:

1. **Top Layer** – Natural / pre-patinated zinc sheet (~0.5mm thick) / mineral pigmented
2. **Core Material** – Typically :
  - Polyethylene (PE Core) – Standard use.
  - Fire-Retardant Core (FR Core) – Mineral-filled for enhanced fire resistance.
3. **Bottom Layer** – Zinc or aluminum backing as a composition coil / product for additional stability.

#### 2. Key Properties of Zinc Composite Panels

- ✓ **Aesthetic Appeal** – Offers a sleek, modern, and elegant finish. Comes in **natural, pre-weathered, or textured surfaces**.
- ✓ **Lightweight Yet Strong** – Lighter than solid zinc sheets but retains strength.
- ✓ **Corrosion Resistance** – Naturally forms a **protective patina** over time, preventing rust.
- ✓ **Fire Resistance** – Available in **FR-grade panels** with non-combustible cores.
- ✓ **Flexible & Easy to Shape** – Can be bent, curved, or perforated for **creative architectural designs**.
- ✓ **Sustainable & Recyclable** – Zinc is a **100% recyclable** metal, making ZCPs an eco-friendly choice.
- ✓ **Low Maintenance** – Requires minimal upkeep as the natural patina protects against aging.

#### 3. Applications of Zinc Composite Panels

##### A. Exterior Applications

- Building Facades & Cladding** – Used in skyscrapers, commercial buildings, and luxury residences.
- Roofing** – Durable and weathers naturally, developing a **patina** over time.
- Architectural Features** – Ideal for artistic and curved designs.

##### B. Interior Applications

- Wall Paneling & Ceilings** – Adds a premium look to homes, offices, and malls.
- Furniture & Decor** – Used in designer furniture and decorative elements.

##### C. Industrial & Special Use

- Transportation & Automotive** – Applied in high-end vehicles and transportation hubs.
- Hospitality & Retail Spaces** – Used in high-end hotels, showrooms, and brand stores.

#### 4. Types of Zinc Composite Panels

##### A. Based on Finish

- Natural Zinc – Develops a natural patina over time.
- Pre-patinated Zinc – Comes with a pre-weathered surface (gray, black, or blue tones).
- Vibgyor Zinc – Pigment-finish for custom color options.
- Textured Zinc – Embossed or brushed for unique textures.

##### B. Based on Core Material

- **PE-Core (Polyethylene Core)** – Standard panels, less fire-resistant.
- **FR-Core (Fire-Retardant Core)** – Made with mineral-filled core for enhanced fire safety.

#### 5. Zinc Composite Panel vs. Aluminum Composite Panel (ACP)

Feature	Zinc Composite Panel (ZCP)	Aluminum Composite Panel (ACP)
Material	Zinc outer layer	Aluminum outer layer
Durability	Higher, forms a patina	Moderate, can corrode over time
Fire Resistance	Available in FR-grade	Available in FR-grade
Aesthetics	Luxurious, natural finish	More color options
Feature	Zinc Composite Panel (ZCP)	Aluminum Composite Panel (ACP)
Weight	Heavier than ACP	Lighter
Price	More expensive	Cheaper





## 6. Installation Process of Zinc Composite Panels

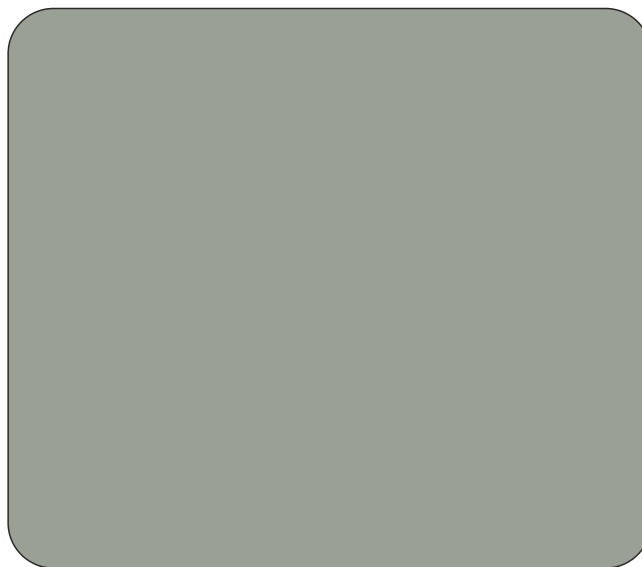
1. **Surface Preparation** – Ensure the wall/substrate is clean and even.
2. **Frame & Support Structure** – Aluminum/steel sub-frame installed for holding panels.
3. **Panel Cutting & Fabrication** – Panels are cut, bent, or perforated based on design.
4. **Fixing & Fastening** – Panels are fixed using rivets, adhesive, or mechanical fasteners.
5. **Sealing & Finishing** – Seams and joints are sealed to prevent water ingress.



Super Zinc Vibgyor Tan / Hazzel

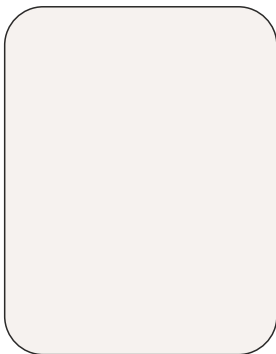


Super Zinc Vibgyor / Black

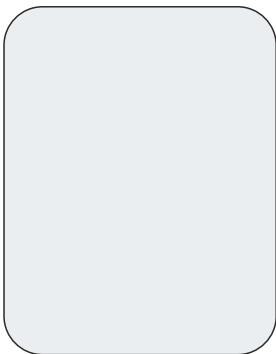


Super Zinc Gun Metal

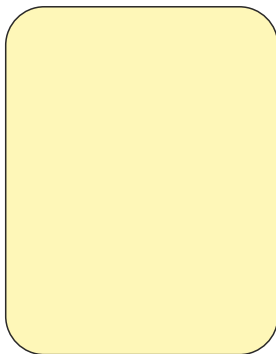
SOLID SERIES



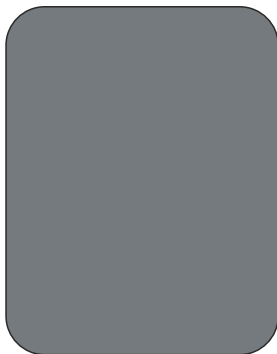
 SB 503 MILKY  
WHITE



 SB 131 BRIGHT  
WHITE



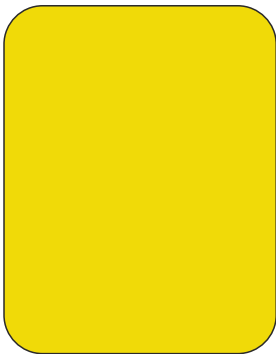
 SB 113 OFF  
WHITE



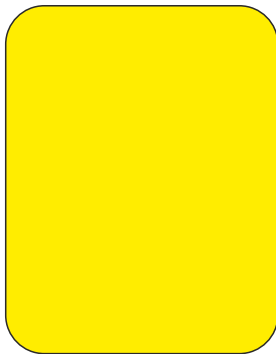
 SB 215 SLATE  
GREY



 SB 243 INDIAN  
RED



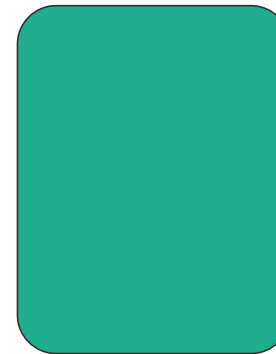
 SB 232 TRAFFIC  
YELLOW



 SB 231 LEMON  
YELLOW



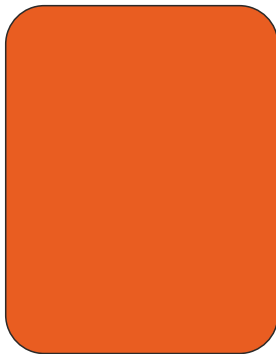
 SB 323 EMERALD  
GREEN




 SB 420 GRASS  
GREEN



 SB 212 JET  
BLACK

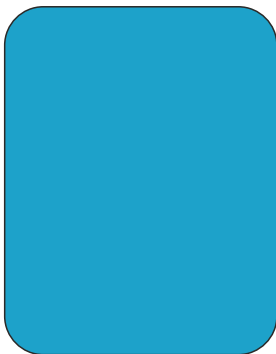


 SB 331 GARNET  
ORANGE

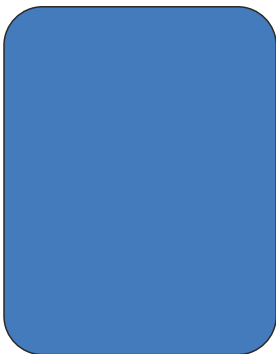


 SB 373  
BURGUNDY

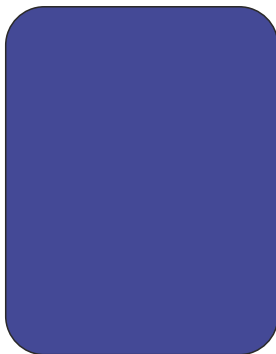
SOLID SERIES



 SB 261 TWILIGHT  
BLUE



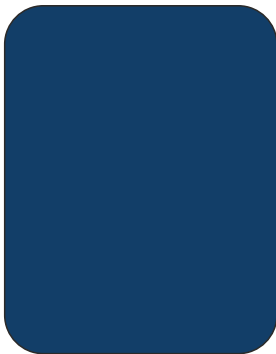
 SB 353 SIGNAL  
BLUE



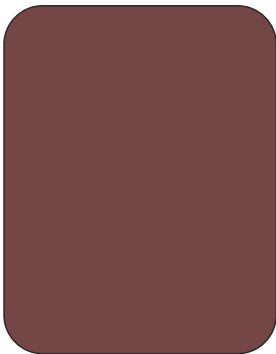
 SB 333 NAVY  
BLUE



 SB 041 MARINE  
BLUE



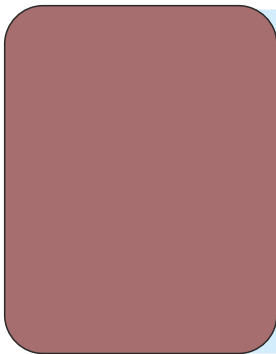
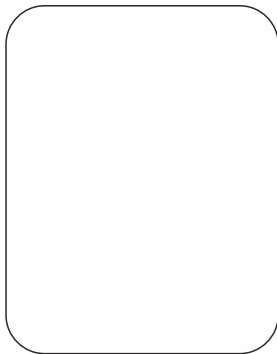
 SB 042 DEEP  
SEA BLUE



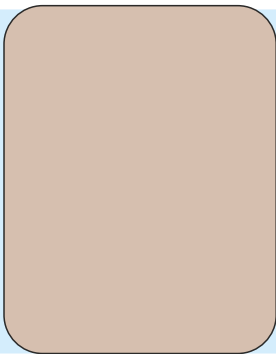
 SB 600 CHOCO  
BROWN



 SB 210 CEMENT  
GREY



 SB 211 DHOLPUR  
RED



 SB 216 BEIGE

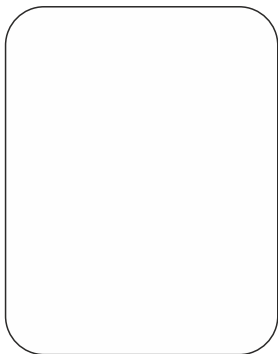


 SB 265  
LAVENDER

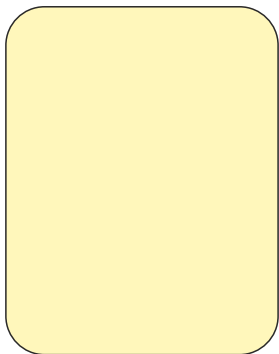
N  
E  
W  
  
L  
A  
U  
N  
C  
H



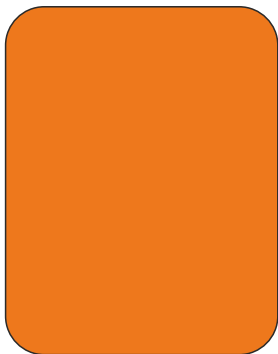
GLOSSY SERIES



 SB 350 WHITE  
GLOSSY



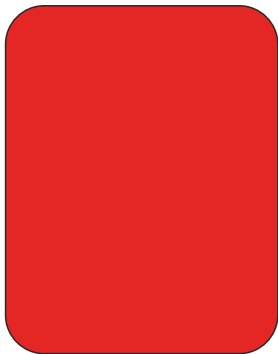
 SB 390 IVORY  
GLOSS



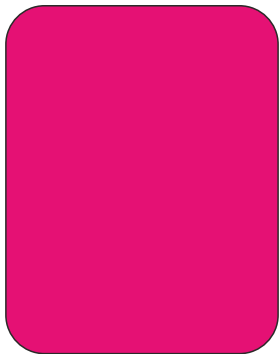
 SB 340 ORANGE  
GLOSSY



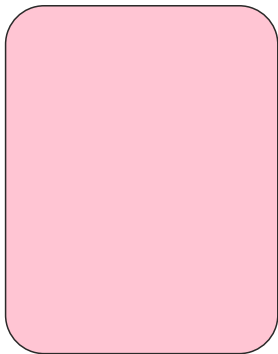
 SB 330 BLACK  
GLOSSY



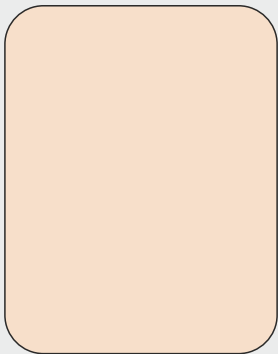
 SB 360 RED  
GLOSSY



 SB 504 PINK  
GLOSSY



 SB 320 PASTEL  
PINK

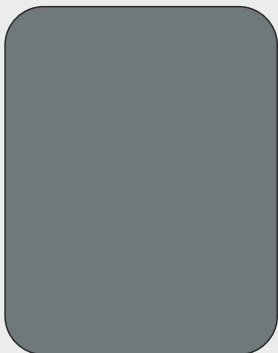


 SB 294 MAGIC  
GOLD GLOSSY

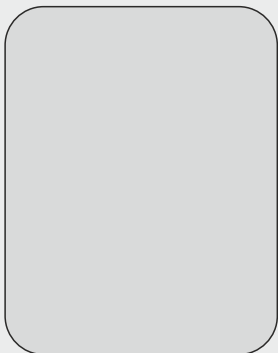
P  
R  
E  
M  
I  
U  
M  
  
G  
L  
O  
S  
S  
Y  
  
S  
E  
R  
I  
E  
S



 SB 380 SLATE  
GREY GLOSSY



 SB 310 DARK  
GREY METALLIC  
GLOSSY



 SB 298 SILVER  
GLOSSY



 SB 450 LIME  
GREEN GLOSSY

METALLIC SERIES



 SB 132 SILVER  
GREY



 SB 133 FLASH  
SILVER



 SB 122  
CHAMPAGNE  
SILVER



 SB 123  
CHAMPAGNE  
GOLD



 SB 010 DARK  
GREY METALLIC



 SB 253 LIGHT  
BRONZE



 SB 213 PALM  
COPPER



 SB 283 ROSE  
METALLIC



 SB 233  
CRYSTAL GOLD



 SB 263 METALLIC  
GOLD



 SB 273 METALLIC  
BRONZE



 SB 251 METALLIC  
BLUE

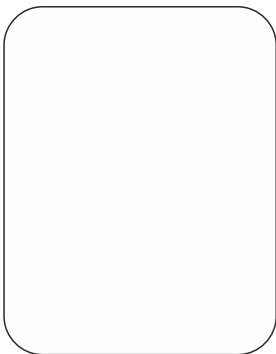
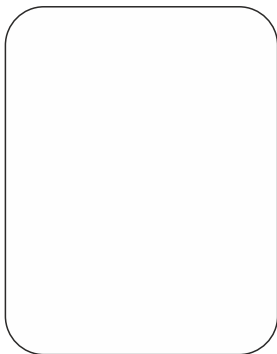
METALLIC SERIES



 SB 016 CHOCO  
METALLIC



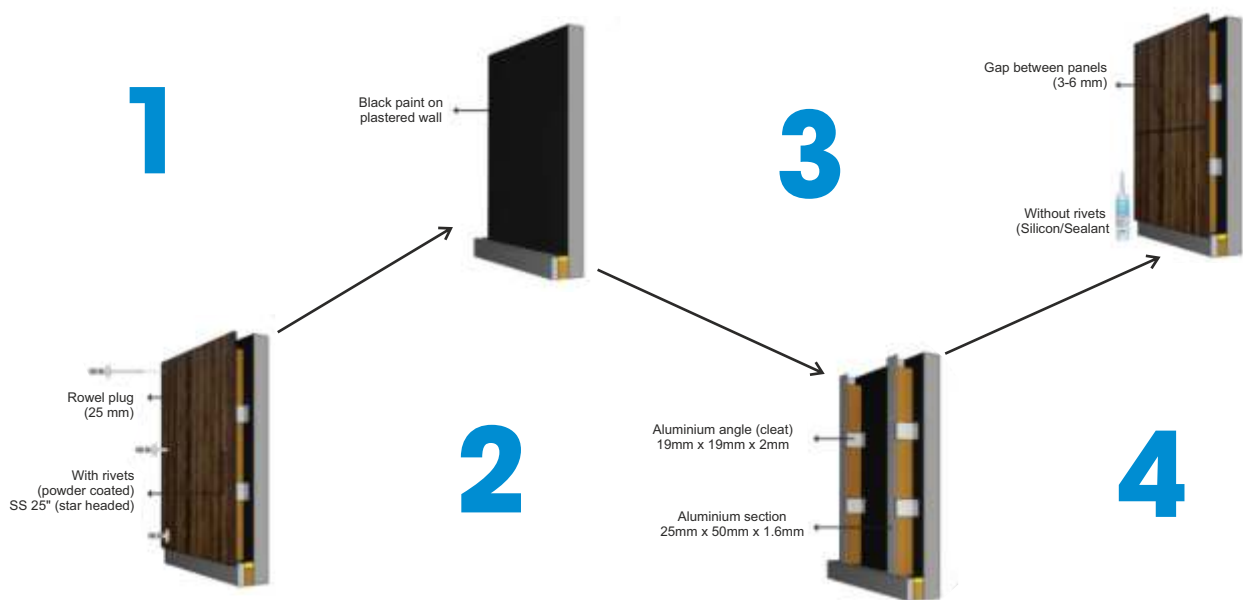
 SB 326 PHEONIX  
COPPER





It is here that SUPER BOND brought forward AHPL, which is an Aluminium based High Pressure Laminate (HPL). It is more durable and elegant in looks as compared to wood. It is also highly weather resistant. AHPL has overcome the shortcomings of wood as it is manufactured using aluminium coil with double layered Lumiflon coating that is resistant to dust. It has a polyethylene core that makes it resistant to water, fungus and termite.

To top it all Super Bond HPL comes in a variety of colors, texture and sizes. SUPER BOND also offers customized colors and sizes. AHPL has redefined the concept of high-end facade and exterior. SUPER BOND offers professionals service as it has a robust marketing network in India and abroad. Whether it is Villas, Housing Societies, Corporate Buildings or Resorts, AHPL is a perfect foil in place of wood.



#### Fixing Detail (with Rivets)

- Black Paint on Plastered Wall
  - Fix aluminium section on wall, maintain gap of 400 - 700mm center with help of cleat vertically
  - Pilot hole must be pre-drilled before fastening rivest tight.
  - Size of rivets must be three times the thickness of panel and gouge of aluminium.
- Ensure rivets used are fully threaded.

**Note : Majorly all Exterior ACP Series can be made as HPL**

# SUPERBOND FIREGUARD FR

Grades - A2, B1 & B2

Fire Retardant Class A2 (under EN 13501-1) refers to materials with very limited combustibility. They do not significantly contribute to fire growth and produce minimal heat when exposed to flame.

## Brief Summary:

- Combustibility: Limited (not fully non-combustible like A1)
- Typical Label: A2-s1, d0
- s1 = low smoke production
- d0 = no flaming droplets
- Examples: Mineral wool, fiber cement, some treated boards
- Use: High-rise buildings, facades, insulation—where high fire safety is required



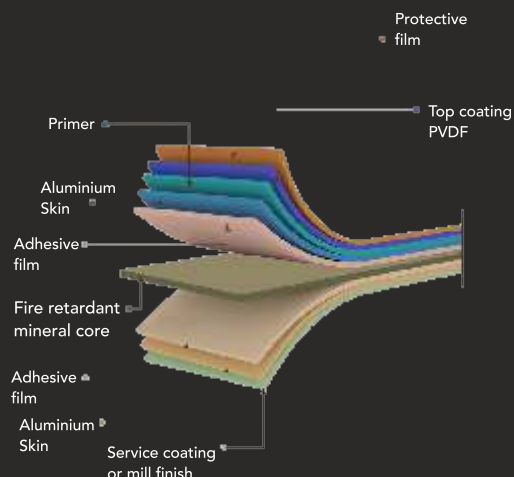
## The core secret

FR Core is a non halogenated FR material that produce water vapor when it heats up. It does not produce toxic gases like the halogenated materials.

Magnesium hydroxide (MDH) is the non-halogenated material that is mixed with PE to form the core of Super Bond's FR products. MDH has a better fire- resistance performance than aluminium trihydrate (ATH), the other non-halogenated material, owing to higher decomposition temperature

Futhermore MDH is more environment-friendly than other similar materials.

MDH delays the PE transformation from solid to plastic (the point of ignition up to 360°C, by releasing water molecules and bringing down the temperature continuously.



## Basic chemical reaction of the FR core

Core Details	Polyethylene	Magnesium hydroxide (MDH)	Aluminium trihydrate (ATH)
Chemical reaction	$\text{CH}_2 + \text{O}_2 = \text{CO}_2 + \text{H}_2\text{O}$	$\text{Mg}(\text{OH})_2 = \text{MgO} + \text{H}_2\text{O}$	$2\text{Al}(\text{OH})_3 = \text{Al}_2\text{O}_3 + 3\text{H}_2\text{O}$
Decomposition temperature	90°C to 110°C	310°C to 360°C	190°C to 240°C
Status	Heat generation	Heat absorption	Heat absorption



**Louvers** – Our new range of SUPERBOND louvers are designed to provide a typical building cladding solutions for architects, design firms and developers; everything we do on the ACP side of the business keeps us fully committed to creating premium buildings with a breath-taking appearance that sets each one apart from the ordinary.

Our Louvers have been designed to be nothing short of exquisite, for those who want to be surrounded by architectural elegance. Made to fit your taste, this range is the perfect way to add a personal touch and sprinkle of sophistication to your home or office.

#### Features

- Ready to use. [Water & termite free]
- Maintenance free
- Ideal for residential & commercial designing
- Easy installation
- Scratch resistance
- Customised sizing
- Wide range of color
- Fire retardant grade available

#### Applications

- Interior cladding
- Exterior cladding
- Roof cladding
- Gate panelling
- Canopy
- Fence & railing

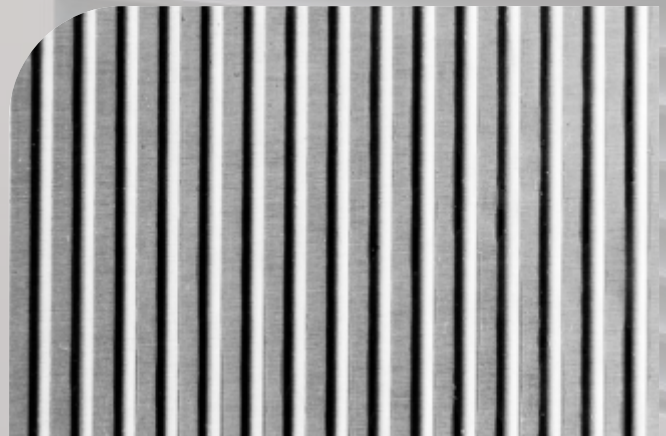
#### Sizes available

- Vertical louvers size options :  
56mm ; 35mm and 25 mm
- Length available :  
2440 and 3050
- Width :  
762 mm and 610mm



**SUPERBOND®**  
FUNCTION • QUALITY • DESIGN

ONE OF THE LARGEST  
MANUFACTURERS OF  
**ACP LOUVERS**





# Clientele



**SUPERBOND**  
FUNCTION • QUALITY • DESIGN

**Head Office:** 17, Super House,  
Amar Brass Industrial Estate,  
Kalina CST Road, Santacruz East,  
Mumbai - 400 098

**Email:** superbond@superbondindia.co.in

**Factory Address:** Keybond Industries LLP,  
Plot No. 6, 7 & 17, 18, Amgaon Industrial  
Estate, Village Amgaon, Taluka Talasri,  
Palghar, Maharashtra - 401 606.

**Email:** keybondindia@gmail.com

**Web:** www.superbondindia.co.in



## 12\* Years Warranty

All Super Bond products are a landmark in durability and quality. Our stringent quality checks ensure that our products are free from any manufacturing defects. However, we recommended that you inspect the products prior to installation. In case of any issues with product quality, we are liable for the cost of our product only. Complete details regarding the warranty terms are available with our authorized dealers.

\* Not applicable in Interior Grade.



Scan here for  
Corporate Video

